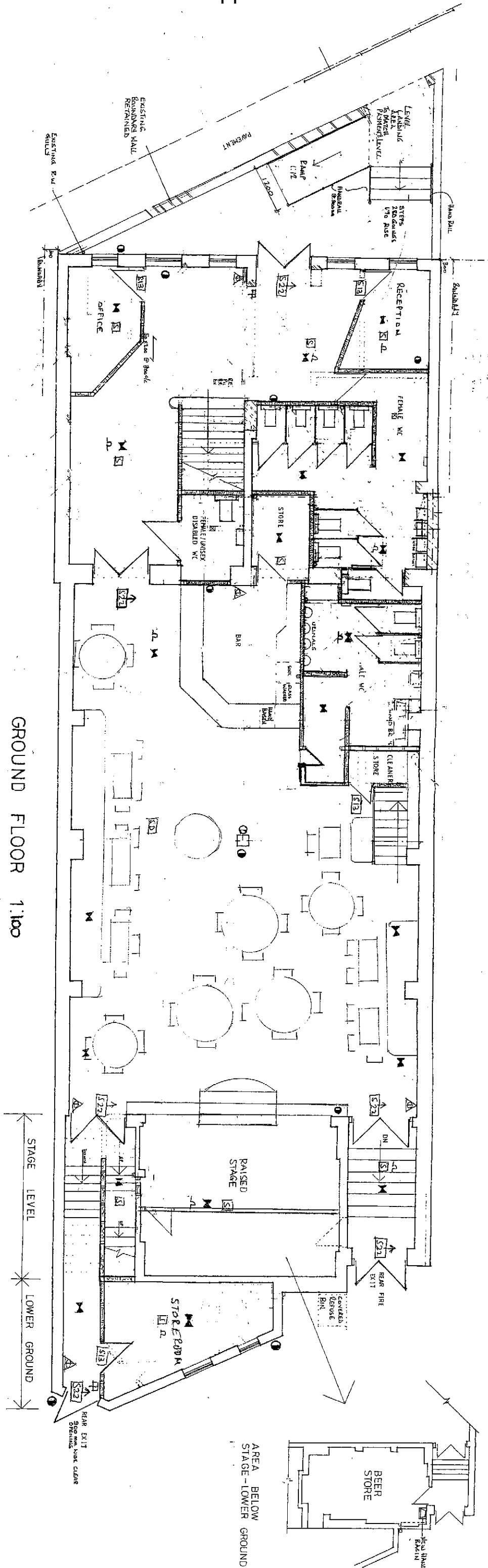
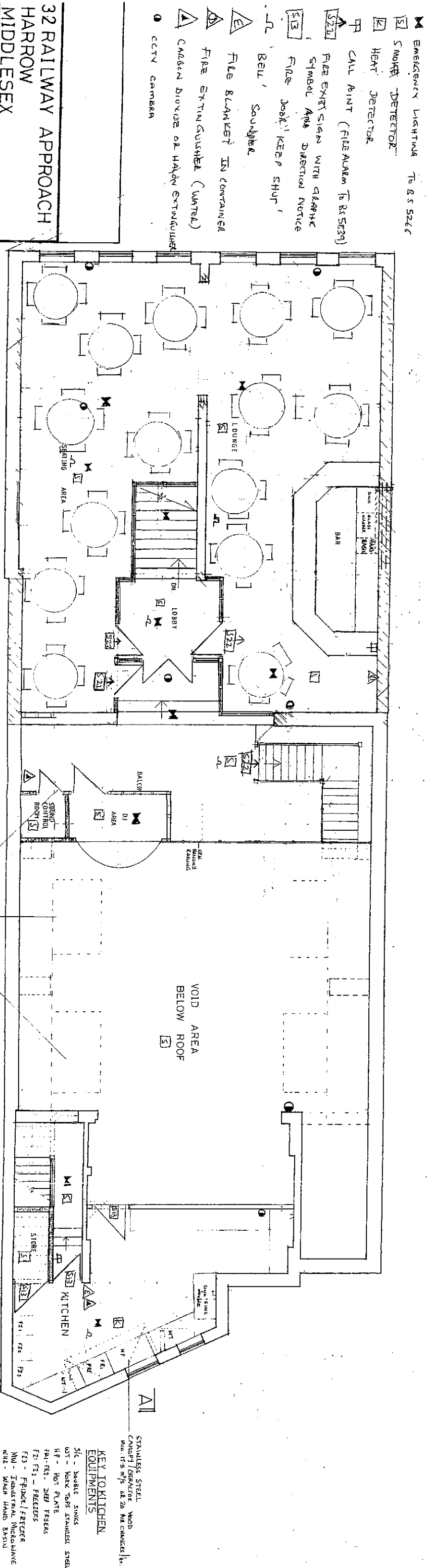


# 328304114



GROUND FLOOR 1:100



FIRST FLOOR 1:100

32 RAILWAY APPROACH  
HARROW  
MIDDLESEX  
PROPOSED FLOOR PLAN  
Scale 1:100 Date: JAN 2009  
DRG. No - KS/01/09

- EMERGENCY LIGHTING To BS 5266
- SMOKE DETECTOR
- HEAT DETECTOR
- CALL BELL (FIRE ALARM To BS 5239)
- FIRE EXIT SIGN WITH GRAPHIC SYMBOL AND DIRECTION ARROW
- FIRE JOCKEY KEEP SHUT
- BELL SOUNDER
- FIRE BLANKET IN CONTAINER
- FIRE EXTINGUISHER (WATER)
- CARBON DIOXIDE OR HALON EXTINGUISHER
- CCTV CAMERA

- STRUCTURE FINISHES  
CEILING - PACTERBOARD LINER AND PAINTED WHITE
- WALLS - CERAMIC TILES WITH EPoxy RESIN ADHESIVE FINISH TO BE CARPENTERED WALL TO CEILING ALL AROUND  
FLOOR - NON SLIP CERAMIC TILES DARK GRABE OF USE
- KEY TO KITCHEN EQUIPMENTS  
SIC - DOUBLE SINKS  
UT - WASH TUB STAINLESS STEEL  
HP - HOT PLATE  
FBI - FRI - 200T FRIGERS  
F21 - F23 - FREEZERS  
F23 - FRIDGE/FREEZER  
MIX - INDUSTRIAL MIXER/WHISKER  
MIX - WASH HAND BASIN
- STAINLESS STEEL WOOD CANTY LEVERED 20 IN CHANGING IN